

Fully Containerised Sludge Dewatering System



Capacities: 0.5m³/hr to 3.5 m³/hr sludge with 1% dry solids.

Simple and efficient.

The dewatering plant is a packaged and containerised system complete with all the necessary polymer preparation and dosing system needed prior to the dewatering process.

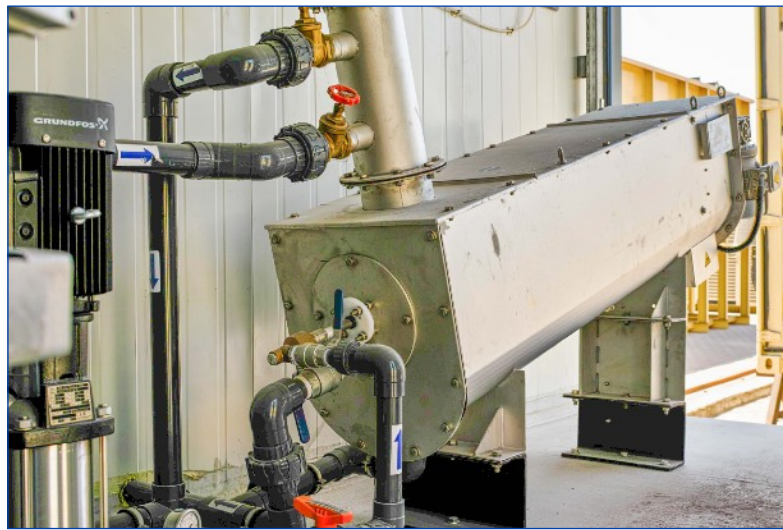
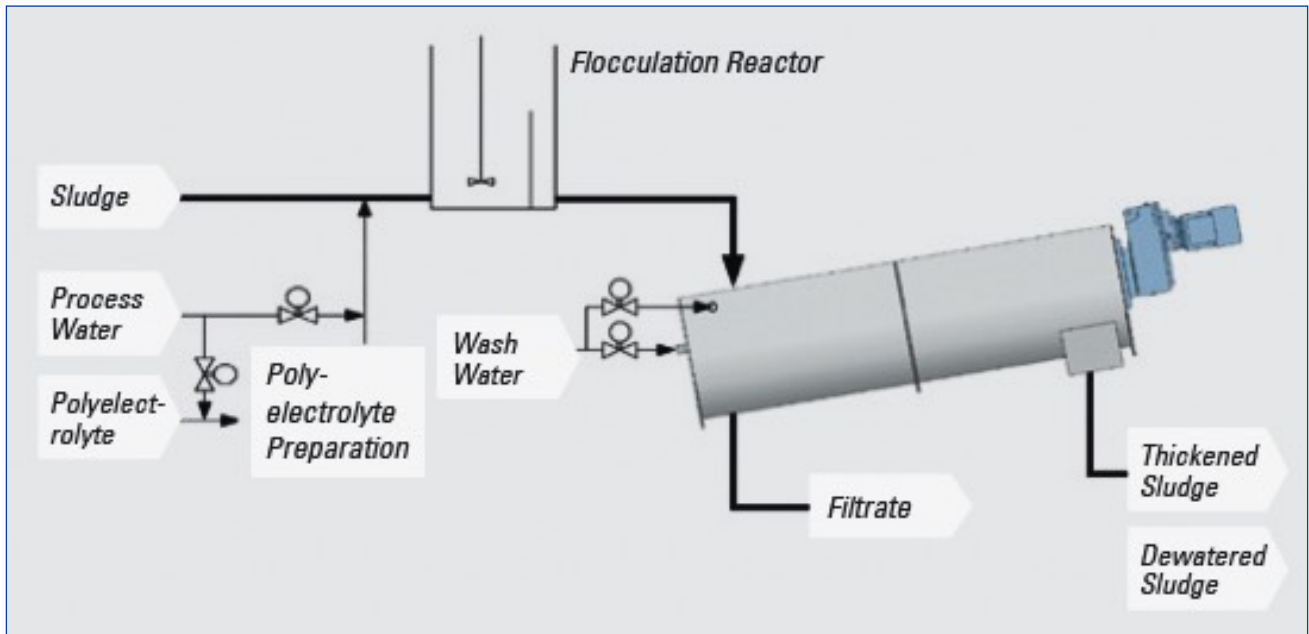
The plant is mostly used for dewatering digested sewage sludge from small to medium size treatment plants with a typical feed sludge of 1% dry solids. The dewatered sludge will typically reach 20% dry solids which equates to a water reduction of 20 times. This translates to a huge savings in transport and disposal cost of the waste sludge.

At 20% dry solids, the sludge is no longer a liquid by a reasonably dry cake that can be bagged, used as a soil improver or trucked off site to landfill.

The dewatering plant can operated continuously or intermittently and is best used after the treatment plants sludge consolidation tank.

Sludge Dewatering

Containerised Screw Press Technology





Sludge Dewatering

Containerised Screw Press Technology

Dynameau Ltd is a UK engineering, technical design and sales consultancy company operating in the sectors listed below:

MSW Processing using PulpStar technology

Digestate dewatering & nutrient recovery

Livestock slurry dewatering & nutrient recovery

Biological packaged waste water treatment Plants

Electrocoagulation "Chemical Free" waste water treatment - an alternative to DAF

Chemical free pool disinfection using combines ozone and UV technology

Oily Water Separators

Biogas plants

Biomass, digestate and slurry drying and pelletising

Biomass-to-Energy plants

Contact us for expert technical help.